



ENHANCED GSE MANAGEMENT EFFICIENCY WITH SMARTFLEET

Revolutionizing Airport Ground Operations

INFORM and HiSERV have teamed up to deliver SmartFLEET, a cutting-edge software solution designed to optimize the management of Ground Service Equipment (GSE). Leveraging AI-driven technology and real-time data, the joint solution offers unparalleled insights and efficiency for ground handling operations.

Your Key Benefits:

- Enhanced Operational Efficiency: Real-time data and analytics to streamline GSE usage.
- Cost Savings: Optimize resource allocation and reduce operational costs.
- GSE Pooling: Increase efficiency and save costs through economy of scale.
- Predictive Maintenance: Minimize downtime and extend equipment lifespan.
- Improved Safety: Enhance GSE safety through proactive monitoring.
- Sustainability: Reduce CO₂ emissions and environmental impact.

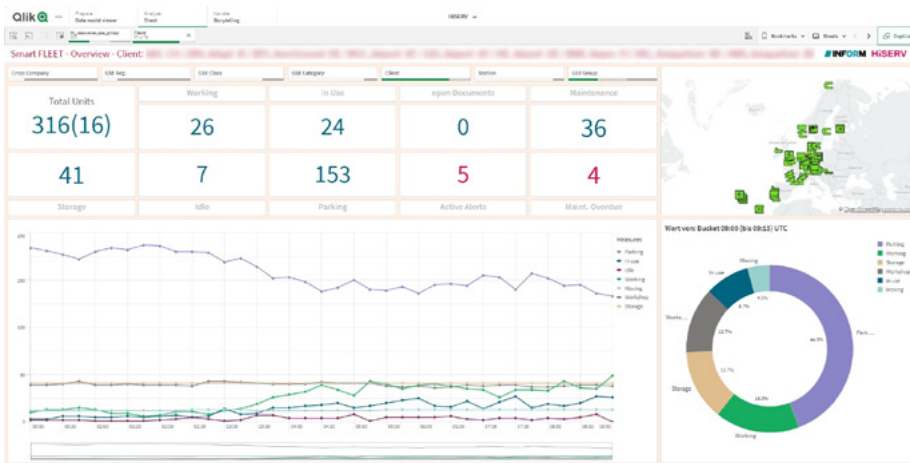
/ REVOLUTIONIZING GROUND HANDLING WITH SMARTFLEET

INFORM and HiSERV, a premier GSE service provider, have launched SmartFLEET, a comprehensive solution for managing GSE fleets. This strategic partnership provides a powerful tool for airports, airlines, and ground handlers.

offers real-time insights and key performance indicators (KPIs) critical for optimizing operations. The solution supports informed decision-making, enabling customers to manage their fleets more efficiently, reduce costs, and improve overall service quality.

SmartFLEET utilizes on-board units to collect extensive telemetry data, including location, usage patterns, and maintenance needs of each GSE unit. This data is then processed and displayed on intuitive dashboards. With the help of INFORM's GroundStar Software suite, it offers

The cloud-based, Software as a Service (SaaS) model ensures accessibility and scalability, allowing for seamless integration and continuous updates.



The dashboard shows a detailed list of 655 units with the following summary:

- Total Units:** 655
- Maintenance:** 123
- Open Documents:** 0
- Active Alerts:** 0
- Maint. Overdue:** 16
- Mainl. Next Week:** 0
- Storage:** 0

The table includes columns for Unit ID, Unit Class, Unit Status, Location, and various metrics related to unit performance and maintenance.

Contact data

INFORM GmbH
Pascalstraße 35 / 52076 Aachen / Germany
aviation@inform-software.com